

# Postdoctoral Transition Fellow (Senior Research Associate)

Closing Date: 17<sup>th</sup> November 2024  
Job Reference: SW43656



# Postdoctoral Transition Fellow (Senior Research Associate)

**Salary:**

£45,585-£57,696

**Contract:**

Fixed-Term for 2 years in the first instance

**Location:**

Cambridge

**Faculty / Department:**Cancer Research UK –  
Cambridge Institute**Responsible to:**Prof Richard Gilbertson,  
Director of the CRUK Children's  
Brain Tumour Centre of  
Excellence**Working Pattern:**

Full Time

**Purpose of the role**

We are seeking to recruit a highly motivated Postdoctoral Transition Fellow in Machine Learning and Cancer to join Professor Richard Gilbertson's group at the Cancer Research UK Cambridge Institute as part of the Cancer Research UK Children's Brain Tumour Centre (CRUK CBTCE).

While children's cancer survival has more than doubled in the last 50 years, there has been little progress for children's with brain tumours. Brain tumours remain the most common cause of cancer-related death in children. Limited progress in these diseases relates directly to the use of inaccurate preclinical pipelines that fail to identify drugs with activity in patients. The CRUK CBTCE convenes a critical mass of expert personnel, infrastructure and global collaborations in paediatric brain tumour biology, medicinal chemistry, pharmacology, together with expertise in preclinical and clinical trials. The CRUK CBTCE research strategy is centred around our innovative pipeline that aims to generate curative treatments for children with brain tumours.

The CRUK CBTCE has received an additional 5 years of funding from CRUK and is currently expanding capacity, building on the success of our previous 6-year programme: <https://www.crukchildrensbraintumourcentre.org/> Plans for the new funding include using artificial intelligence and machine learning to create the world's first entirely digital models of the hardest to treat children's brain tumours. The models will be used to help identify new treatment targets, develop potential new drugs and test them via virtual clinical trials within computer models of cancer – allowing researchers to weed out treatments with little benefit before they reach patients.

The CRUK CBTCE is recruiting a Postdoctoral Transition Fellow to work on a project using artificial intelligence and machine learning to create the world's first entirely digital models of the hardest to treat children's brain tumours. The models will be used to help identify new treatment targets, develop potential new drugs and test them via virtual clinical trials within computer models of cancer. The role will focus on the development of state-of-the-art machine learning approaches for the analysis of spatial sequencing data of childhood cancers including medulloblastoma and ependymoma in collaboration with the Alan Turing Institute, London and MD Anderson Cancer Center, Texas USA.

This position is particularly suited to candidates who have demonstrated potential and interest in pursuing a career as an independent researcher. The successful candidate will have a PhD in a relevant subject area (e.g. bioinformatics, computer science, machine learning) and possess experience of developing computational models with scientific applications.

This is a unique opportunity as the role holder will be part of the CRUK CBTCE Early Career Research Network and will have access to career support and expert mentoring with the aim of applying for independent funding at the end of the two year funding period. The role holder will also have opportunities to work Professor Steven Niederer at the Alan Turing Institute and collaborate with Dr Bissan Al-Lazikani in MD Anderson Cancer Center. The successful candidate must have a PhD. The role holder will be able to work independently and interact well in a dynamic multi-disciplinary team environment.



# Person Specification

Criteria	Essential	Desirable
<b>Education and qualifications</b>		
A PhD in computer Science, bioinformatics, computational biology, or related science discipline	✓	
<b>Skills and experience</b>		
Extensive experience at postdoctoral research level from at least one previous appointment.	✓	
Sufficient breadth/depth of specialist knowledge in the discipline and of research methods and techniques to develop research objectives, projects and proposals.	✓	
Strong evidence of producing scientific publications to high standards	✓	
Experience of developing computational models with scientific applications	✓	
Demonstrable rising research trajectory, suggesting a potential to achieve research independence within approximately 12 months of appointment.	✓	
Skilled at balancing the pressures of research and administrative/other demands and competing deadlines.	✓	
Sufficient administrative skills to manage project/s including financial management.	✓	
Experience in leading for the personal and professional development of research team members, including postgraduate students, including training them in specific technical skills/techniques.	✓	
<b>Interpersonal and communication skills</b>		
Excellent written and verbal communication and presentation skills	✓	
Excellent organisation skills and attention to detail	✓	
Highly collaborative, good communicators, able to find solutions to problems. Ability to work independently as well as in a team	✓	
Creative thinkers, able to contribute intellectually to other projects developed in the laboratory	✓	
Invested in supporting a diverse, inclusive, equal, sharing and collaborative environment	✓	

## Behavioural Attributes

This section summarises the behavioural attributes (or competencies) that we expect the role holder to be able to demonstrate, at what level and whether this is an essential or desirable requirement. Full definitions are at: <https://www.hr.admin.cam.ac.uk/policies-procedures/behavioural-attributes>

Please review these and provide specific examples in your application of how you have demonstrated these attributes in your work, education or other experience. It will assist your application if you explain the situation, what you did and what the outcomes were.

Attribute	Level
Valuing Diversity	A
Achieving Results	B
Communication	B
Innovation and Change	B
Negotiating and Influencing	B
People Development	B
Relationship Building	B
Strategic Focus	B

## Professional Services Values

Developed by professional services staff, our values underpin everything we do. By living the values in the work we do, we hope to foster an environment where staff feel empowered. The values encourage staff to; work together and share skills to create a sense of community, act with integrity, take an inclusive and fair approach and develop honest and open relationships that are underpinned by our shared values. We encourage applicants to consider these values within their application.





# CRUK Cambridge Institute

The Cancer Research UK Cambridge Institute (CRUK CI, [www.cruk.cam.ac.uk](http://www.cruk.cam.ac.uk)), housed in the Li Ka Shing Centre, focuses on tumour ecology and evolution. We are one of 4 CRUK core-funded Institutes, the others being the Manchester Institute, The Beatson Institute, and The Francis Crick Institute.

The CRUK CI has a diverse faculty comprising both basic and clinical investigators and aims not only to contribute fundamental discoveries in the basic biology of cancer but also to translate these into the clinic in a way that benefits patients. We have particular strengths in genomics, computational biology, and imaging, and currently devote significant research effort to cancers arising in the breast, pancreas, brain, and colon.

Our underlying philosophy is that only by embracing the full complexity of human cancers will we be able to devise new and effective treatment strategies. This leads many of our groups to examine questions relating to tumour heterogeneity, both between and within individual patients, with a goal of understanding how genomic and phenotypic diversity impact the course of disease development and its response to treatment. We also study the ecology of tumours, probing how interactions between tumour cells and the normal cells of the patient influence their respective behaviours. This includes immune cells but extends to other cell types of the stroma and vasculature. Overall, the Institute seeks to build within areas of strength but is also keen to extend our reach to other cancers of unmet need.

We are a core-funded Institute, receiving generous and flexible support from CRUK, which is meant both to provide a state-of-the-art research environment and to enable investigators to engage in high risk/high reward and/or long-term strategic research programs that would be unlikely to be funded by other mechanisms. We are currently supported by 12 core facilities, whose remits range from genomics and proteomics to whole animal imaging. We also benefit from a dedicated, professional administrative staff.

We have a highly interconnected and collaborative faculty and a vibrant research

environment. We serve as a significant hub within the broader Cambridge cancer community and house the headquarters of the CRUK Cambridge Centre, the largest of the CRUK Major Centres. In addition, the CI contributes to many of the collaborative centres and initiatives that Cancer Research UK helps to support, including the [Cambridge Biomedical Research Centre](#), the [Experimental Cancer Medicine Centre](#), and the [Cambridge Pancreatic Cancer Centre](#).

We are sited on the Cambridge Biomedical Campus, home to Addenbrooke's Hospital, the University of Cambridge teaching hospital. This site, which encompasses the largest biomedical research cluster in Europe, also hosts many of our collaborating institutes, including the [MRC Laboratory for Molecular Biology](#), the [Hutchison/MRC Research Centre](#), the [Strangeways Research Laboratories for Genetic Epidemiology](#), the [Wellcome Trust Stem Cell Institute](#) and the [Cambridge Institute for Medical Research](#). The campus will soon be home to the Astra Zeneca world headquarters. In the wider Cambridge area we also have extensive links with the [Wellcome Trust Sanger Institute](#), and the [European Bioinformatics Institute](#). The CI is also a member of the [Organisation of European Cancer Institutes \(OECI\)](#).

Overall, the CRUK Cambridge Institute provides an outstanding scientific environment in which investigators are driven to make critical contributions to our understanding of cancer and its treatment.



Professor Greg Hannon, Director of Cancer Research UK Cambridge Institute

# School of Clinical Medicine

Doing great work in a great place to work

## About the School

The School of Clinical Medicine currently employs nearly 3,000 people, spanning all varieties of staff type from Academic Professors to administrative support.

In 1976 in response to the recommendation of the Royal Commission on Medical Education in the late 1960's, a complete medical course was re-established in Cambridge with the opening of the School of Clinical Medicine at the new Addenbrooke's Hospital site.

On 21st November 1980, HRH The Duke of Edinburgh, the Chancellor of the University of Cambridge, officially opened the Clinical School Building which presently accommodates the medical library, lecture theatres and seminar rooms.

The University of Cambridge School of Clinical Medicine aspires to change the practice of medicine and improve biological understanding in a wide range of clinical specialties and scientific disciplines. Collaborative research, both within biomedicine and crossing the boundaries to the mathematical, physical and social sciences, is key to our approach. The School also supports key enabling technologies and facilities in imaging, bioinformatics and biological systems. The main areas of research interest are:

- Cancer research
- Cardio-Respiratory Medicine
- Cellular mechanisms of disease
- Diabetes, Endocrinology and Metabolism
- Epidemiology, Public Health and Primary Care
- Genetics and Genetic Medicine
- Haematological and Transplantation Medicine
- Infection and Immunity
- Neurosciences and Mental Health
- Stems Cells and Regenerative Medicine.



**Professor Patrick Maxwell, Regius Professor of Physic and Head of the School of Clinical Medicine**

The School aims to provide leadership in education, discovery and healthcare. It will achieve this through; inspirational teaching and training, outstanding basic and clinical research and integration of these to improve medical practice for both individual patients and the population.

## The School will:

Through inspirational teaching and training, educate individuals who:

- will become exceptional doctors or biomedical scientists
- combine a depth of scientific understanding with outstanding clinical and communication skills demonstrate a caring, compassionate and professional approach to patients and the public and
- are equipped to become future international leaders of their profession.

Through its commitment to the pursuit of excellence, support scientists of international standing in basic and clinical research aiming to:

- understand fundamental biology and thereby the mechanisms underlying disease integrate basic and clinical research
- apply a rigorous mechanism-based approach to clinical problems and
- innovate to solve the health challenges of our society.

# Terms of Appointment

## Tenure and probation

The appointment(s) will be made on a fixed-term basis for 2 years in the first instance.

Appointments will be subject to satisfactory completion of a six-month probationary period.

## Hours of Work and Working Pattern

The hours of work for a full-time position are 37 hours per week, working Monday – Friday.

## Pension

You will automatically be enrolled to become a member of USS (Universities Superannuation Scheme) – a defined benefits pension scheme. If you are already a member of the NHS Pension scheme, you may be eligible to continue in the scheme and should contact the Pensions section of the University. For further information please visit: [www.pensions.admin.cam.ac.uk/](http://www.pensions.admin.cam.ac.uk/).

## Annual leave

Full time employees are entitled to annual paid leave of 41 days inclusive of public holidays. For new part-time employees, annual leave will be pro rata'd based on days worked.

## General information

### Pre-employment checks

### Right to work in the UK

We have a legal responsibility to ensure that you have the right to work in the UK before you can start working for us. If you do not have the right to work in the UK already, any

offer of employment we make to you will be conditional upon you gaining it.

**Health declaration** Once an offer of employment has been made the successful candidate will be required to complete a work health declaration form.

### Qualifications

The person specification for this position lists qualifications that are essential and/or desirable. Please note that if you are offered the post you will be asked to provide your relevant original certificates of these qualifications.

Please note that any offer will be conditional upon independent signoff of the applicant at Senior Research Associate level by the School of Clinical Medicine Faculty Board.

**References** - offers of appointment will be subject to the receipt of satisfactory references.

### Screening Checks:

This role requires a security check and basic disclosure. Any offer of employment we make to you will be conditional upon the satisfactory completion of these checks; whether an outcome is satisfactory will be determined by the University.

### Equality and Diversity

We particularly encourage candidates from a Black, Asian and Minority Ethnic

background to apply for this vacancy as they are currently under-represented at this level within our University.

### Information if you have a disability

The University welcomes applications from individuals with disabilities. We are committed to ensuring fair treatment throughout the recruitment process. We will make adjustments to enable applicants to compete to the best of their ability wherever it is reasonable to do so and, if successful, to assist them during their employment. Information for disabled applicants is available at <http://www.admin.cam.ac.uk/offices/hr/staff/disabled/>

We encourage you to declare any disability that you may have, and any reasonable adjustments that you may require, in the section provided for this purpose in the application form. This will enable us to accommodate your needs throughout the process as required. However, applicants and employees may declare a disability at any time.

If you prefer to discuss any special arrangements connected with a disability, please contact the HR team at [mailbox-hr@cruk.cam.ac.uk](mailto:mailbox-hr@cruk.cam.ac.uk)



# The University

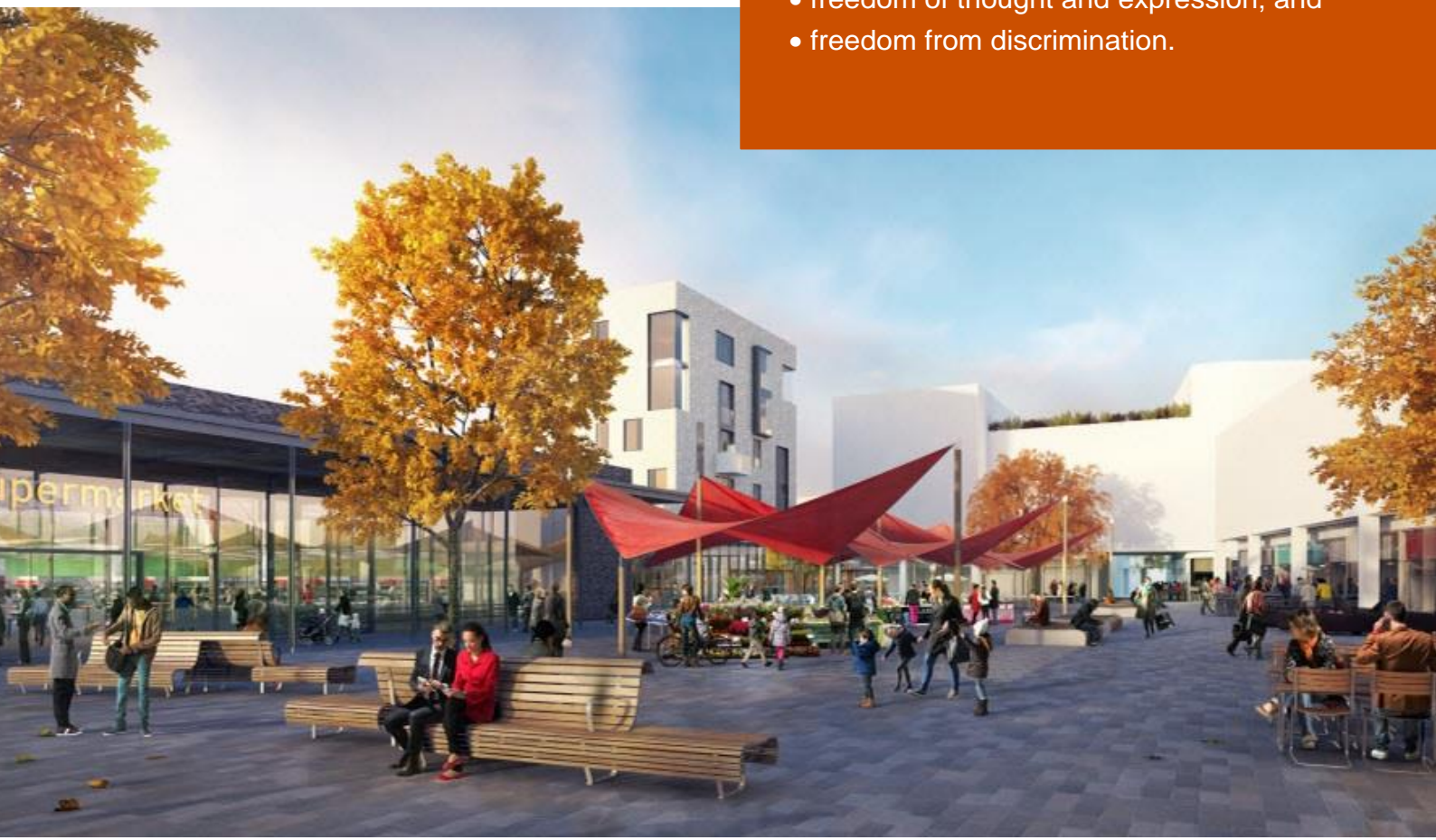
**The University of Cambridge is one of the world's oldest and most successful universities. We are a renowned centre for research, education, and scholarship that makes a significant contribution to society. The University is consistently ranked amongst the top universities in the world. Our affiliates have won more Nobel Prizes than any other University.**

Our sustained pursuit of academic excellence is built on a long history of world-leading teaching and research within a distinctive collegiate system. For eight centuries our ideas and innovations have shaped the world. Our principal goal is to remain one of the world's leading universities in an increasingly competitive global higher education sector. Today the University of Cambridge is at the centre of a cluster of over 4,300 businesses employing 58,000 people.

Our capital investment projects include academic and commercial growth at both the West Cambridge Innovation District, and the Biomedical Campus in the south of the city. Eddington, in North West Cambridge, is a mixed-use development including key worker housing for staff, a community centre and a new primary school, managed by the University. Through these projects, the University is deeply embedded in, and committed to serving, our local community. These are all conspicuous signs of a University that is not only adapting to new needs, but also anticipating the future.

Our mission is to contribute to society through the pursuit of education, learning, and research at the highest international levels of excellence. Our core values are:

- freedom of thought and expression; and
- freedom from discrimination.





# About Us

**The University is one of the world's leading academic centres. It comprises 150 faculties and departments, together with a central administration and other institutions. Our institutions, museums and collections are a world-class resource for researchers, students and members of the public representing one of the country's highest concentrations of internationally important collections.**

The University has an annual income of £2 billion. Research income, won competitively from the UK Research Councils, the European Union (EU), major charities and industry, exceeds £500 million per annum and continues to grow.

The Colleges and the University remain committed to admitting the best students regardless of their background and to investing considerable resources both in widening access and financial support. The 31 Colleges are self-governing, separate legal entities which appoint their own staff. Many academic staff are invited to join a College as a Teaching Fellow, which provides a further social and intellectual dimension. The Colleges admit undergraduate students, provide student accommodation and pastoral support and deliver small group teaching for undergraduates.

The University awards degrees and its faculties and departments provide lectures and seminars for students and determine the syllabi for teaching.

Our instinct for seeking out excellence and setting up enduring and mutually beneficial collaborations has led us to establish strategic partnerships across the globe. Whether it is the successful Cambridge-Africa Programme involving universities in Ghana, Uganda and elsewhere on the African continent; or the close association with the government of India to pursue new research in crop science; or the creation, with Germany's Max Planck Institutes, of a Cambridge-based centre for the study of ethics, human economy and social change – international partnerships are now an inextricable part of the University's make-up.

“Cambridge graduates and researchers have made – and continue to make – a colossal contribution to human knowledge and the understanding of the world around us. Their work touches on the lives and livelihoods of everyone from patients diagnosed with life-threatening diseases, to residents of areas critically affected by climate change, to children growing up in conflict zones. It has a lasting impact on our society, our economy and our culture: the world is truly a better place thanks to their efforts.”

*Stephen Toope, Vice Chancellor 2019*



# Working at the University

**Working at Cambridge you will join a diverse, talented and innovative community, with more than 23,000 students and over 16,000 staff from all walks of life and corners of the world.**

The University continually explores strategies to attract and retain the best people. It is committed to supporting its staff to achieve their best. We are a fair, diverse and inclusive society and we believe our staff are our greatest asset. There is strong commitment to developing institutional leadership and supporting and encouraging staff development at all levels.

We offer a variety of roles including academic, research, professional, managerial and support roles. We also offer extensive benefits and excellent learning opportunities within a stimulating working environment.

The University's estate is undergoing the most significant transformation in its history. Cambridge has been able to create a science and technology campus to the west of the city centre, and is expanding further to the north west of Cambridge including investing in affordable homes for University key workers and community facilities. Even with our continued development, the University remains within walking or cycling distance across the campus. The University is a major partner on the Cambridge Biomedical Campus and we continue to redevelop our historic city centre sites demonstrating our determination to ensure that we can offer the best facilities and opportunities for our staff and students.



## Equality & diversity

The University has built its excellence on the diversity of its staff and student community. We aim to be a leader in fostering equality and inclusion, and in promoting respect and a sense of belonging for all. We encourage applications from all sections of society. All appointments are made on the basis of merit. We have an Equal Opportunities Policy, along with a range of diversity groups, including the Women's Staff Network, Race Equality Network and LGBT+ Staff Network. More details are available here:

<http://www.equality.admin.cam.ac.uk/>

The University has a bronze Race Equality Charter award, with a framework for improving the representation, progression and success of minority ethnic staff and students within higher education. Furthermore, the University's silver Athena swan award recognises and celebrates good practice in recruiting, retaining and promoting gender equality.



# Living in Cambridge

**Cambridge is rich in cultural diversity. From beautiful University and College buildings, museums and art galleries, quaint gardens and punts on the River Cam, to a vibrant restaurant and café scene, our employees are surrounded by the wonderful features of this unique city.**

You can find a wide-range of high street shops and 3 shopping centres, with independent alternatives at the historic market and nestled within the passageways in the city centre. You will find a cinema, bowling alley, a nightclub and various live performances at the Cambridge Leisure Park, with further entertainment options at the Corn Exchange, Arts Theatre and the ADC Theatre. Further information can be found on the Visit Cambridge website.

If you prefer the faster pace of life, London is a 45 minute train journey away. For those travelling from overseas, Stansted Airport is just 45 minutes away and Heathrow Airport under 2 hours away. The University is a short distance from a host of other attractions such as Ely Cathedral, Newmarket Races and various wildlife parks and stately homes. Cambridge is also within easy reach of the beautiful Broads and coastlines of Norfolk and Suffolk.

## Relocation Support

The University recognises the importance of helping individuals to move and settle into a new area. We provide support and guidance to those relocating internationally or domestically to take up a post at the University of Cambridge, liaising with other University offices and selected partners to ensure comprehensive relocation support is available. This includes: accommodation, childcare, schools, banking, immigration and transport. If you would like further information, please visit <https://www.accommodation.cam.ac.uk/RelocationService/>. The Shared Equity Scheme and the Reimbursement of Relocation Expenses Scheme provide financial assistance to qualifying new members of staff with the costs of relocating to Cambridge.

## Accommodation Service

The University Accommodation Service helps staff, students and visiting scholars who are affiliated to the University in their search for suitable accommodation in Cambridge. The dedicated accommodation team can provide access to a wide range of University-owned furnished and unfurnished properties, and has a database of private sector accommodation available for short and long-term lets. For further information and to register with this free service please visit <https://www.accommodation.cam.ac.uk/>



# What Cambridge can offer

**We offer a comprehensive reward package to attract, motivate and retain high performing staff at all levels and in all areas of work.**

The University offers a wide range of competitive benefits, from family leave entitlement, to shopping and travel discount schemes. Our generous annual leave package contributes to the positive wellbeing of our University employees. Sabbatical leave enables academics to focus on research and scholarship, whilst still maintaining their full salary. The University also has a [career break scheme](#) for academic and academic-related staff, with additional flexible working policies for all other staff.

## Pay and benefits

The University salary structure includes automatic service-related pay progression in many of its grades and an annual cost of living increase. In addition to this, employees are rewarded for outstanding contribution through a number of regular pay progression schemes. The University offers attractive pensions schemes for employees, with an additional benefit of a salary exchange arrangement providing tax and national insurance savings.



## CAMbens employee benefits

The University offers employees a wide range of competitive benefits, known as CAMbens. CAMbens offers something for everyone across a range of categories, including:

- Financial Benefits, including shopping discounts (both local and national) and a Payroll Giving scheme;
- Relocation and Accommodation Benefits, including relocation assistance and interest-free Rental Deposit Loans;
- Travel Benefits, including Cycle to Work, discounts on train season tickets and interest-free Travel to Work loans;
- Family Friendly and Lifestyle Benefits, including support with childcare and family friendly policies;
- Health and Wellbeing Benefits, including a University Staff Counselling Service, discounts at the University Sports Centre, and other local gyms, and healthcare schemes.





# What Cambridge can offer

## Family-friendly policies

The University recognises the importance of supporting its staff. We have a range of family-friendly policies to aid employees' work-life balance including a generous maternity, adoption and shared parental leave entitlement of 18 weeks full pay, and paid emergency leave for parents and carers.

Other family-friendly support includes:

Our highly regarded workplace nurseries, a childcare salary exchange scheme and a high quality holiday Playscheme may be available to help support University employees with caring responsibilities (subject to demand and qualifying criteria). Further childcare information can be found here:

<https://www.childcare.admin.cam.ac.uk/>

The Newcomers and Visiting Scholars Group is an organisation within the University run by volunteers whose aim is to help newly arrived wives, husbands, partners and families of Visiting Scholars and members of the University to settle in Cambridge and give them an opportunity to meet local people. The Postdoc Academy supports the postdoctoral community within Cambridge. Further details are available here: <https://www.postdocacademy.cam.ac.uk/>

## Your wellbeing

The University's Sport Centre, Counselling Services and Occupational Health are just some of the support services available to University employees to promote their physical and mental wellbeing. The University delivers The Festival of Wellbeing annually, which is a programme of stimulating talks and activities, which aim to promote wellbeing and good mental and physical health. The University also hosts the [Cambridge Festival](#), which is a great opportunity to get your first taste of public engagement, through volunteering, supporting hands-on activities or proposing a talk.

## Development opportunities

We support new employees to settle in through various activities as well as supporting their professional and career development on an ongoing basis. Our Personal and Professional Development (PPD) team provide development opportunities for all University employees, including face-to-face sessions, online learning modules and webinars. All employees also have unlimited access to LinkedIn Learning to support their development. Both new and existing employees can undertake funded Apprenticeships, which lead to a range of vocational and professional qualifications. We offer reduced staff fees for University of Cambridge graduate courses and the opportunity to attend lectures and seminars held by University departments and institutions. A range of University training providers also offer specialist learning and development in their own areas e.g. teaching and learning, digital literacy, finance, health and wellbeing, safety.





# How to apply

Applications should be submitted online via the University of Cambridge jobs page [www.jobs.cam.ac.uk](http://www.jobs.cam.ac.uk) by clicking “Apply online” in the job advert. You will need an email address to register for our online system.

Conversations about flexible working are encouraged at the University of Cambridge. Please feel free to discuss flexibility prior to applying (using the contact information below) or at interview if your application is successful.

Informal enquiries are welcomed and should be directed to:

[mailbox-hr@cruk.cam.ac.uk](mailto:mailbox-hr@cruk.cam.ac.uk)