

# Laboratory, Purchasing and Facilities Technician

Department of Medicine

CLOSING DATE: 5<sup>th</sup> January 2025

Job Reference: RC44338



# Laboratory, Purchasing and Facilities Technician

**Salary:**

£24,044 - £26,642 per annum

**Contract:**

Permanent

**Location:**

Cambridge

**Department:**

Medicine

**Responsible to:**CUH Laboratory & Facilities  
Coordinator**Working Pattern:**

Full Time

**Purpose of the role**

The role holder will provide a service to a variety of research staff. They will support the Laboratory and Facilities Manager and Senior Laboratory & Building Services Technician, regarding operational processes. They will be responsible for waste disposal, filling liquid nitrogen tanks, distributing gas cylinders, ensure there is an adequate supply of clean laboratory glassware, moving equipment, setting up meeting rooms and assisting with general maintenance/minor refurbishments. They will perform purchasing duties, give advice to end users, clerk in deliveries and receipting goods.

**Key responsibilities****Waste Disposal**

Including but not limited to biological, chemical, electrical and domestic waste according to correct Standard Operations Procedures (SOP).

Collection of bagged biological waste for autoclaving or incineration; Operating Departmental autoclaves; sterilizing equipment; Arrange disposal of electrical equipment through WEEE; Submitting chemical waste forms to contractor and moving chemicals to collection point.

**Liquid Nitrogen & Gas Cylinders**

Fill mobile cryogenic vessels with liquid nitrogen and moving large vessels to basement for refilling by contractor. Distribution of large gas cylinders to point of use, changing cylinders and monitoring stocks. Distribution of dry ice to point of use. Document and record ethanol usage for research groups, maintaining and updating Excel spreadsheet.

**Supplying cleaned laboratory glassware to users**

Collecting laboratory glassware for washing and drying, maintaining adequate stocks.

**Purchasing & Receipt of Goods**

Create and authorize orders and resolve purchasing enquiries; Clerk in deliveries: storing packages at correct temperature and receipting goods on the University CUPS system. Filling Vending Machines and monitoring stocks.

**Couriers & Shipping**

Arrange shipping of consignments (biological/dry ice shipments) to/from collaborators, worldwide.



**Inducting Engineers/Sub contractors & may be required to assist with minor refurbishment duties:**

Liaising with sub-contractors, arranging parking, meeting and greeting, providing brief safety induction, provision of a lab coat and to provide general supervision while they are on site. May need to assist with minor works such as putting up shelving, eye wash stations.

**Setting up meeting rooms & Managing Room Bookings**

Create seminar room bookings, set up users; Assist with movement of equipment and furniture; Organize seating in the meeting rooms and keeping meeting rooms tidy.

**Assist with office and laboratory moves** for small items, in case of larger moves you will be expected to liaise with moving contractors to oversee and report back the completion of moves.

Undertake daily walkabouts and regular visual checks in making sure laboratory space & cold rooms is well maintained. Ensure general housekeeping is maintained to H&S standards.

**Additional Facilities Duties**

The role holder will assist, when necessary, with general support duties in other Departmental Buildings to ensure effective service operations to lab users. This includes, but not limited to:

- Distribution of gas cylinders to point of use, changing cylinders and monitoring stocks of full and empty cylinders.
- Document and record ethanol usage for research groups, maintaining and updating Excel spreadsheet.
- Moving equipment.
- Setting up meeting rooms
- General maintenance duties. Overall to support Lab and Facilities Teams to ensure there is first class service provision in all aspects of the Department.
- Cover for Facilities Technicians in their absence:
  - Ensuring there is an adequate supply of clean laboratory glassware by providing an efficient turnaround service.
  - Waste disposal – collecting waste from labs and autoclaving.
  - Sterilising media/equipment
  - Filling liquid nitrogen tanks

# Person Specification

Criteria	Essential	Desirable
<b>Education</b>		
Good general education (GCSE level)/NVQ Level 2 or equivalent level of practical experience	√	
<b>Experience</b>		
Experience in a caretaker/porterage or similar role	√	
Experience of carrying out minor maintenance tasks	√	
Use of liquid nitrogen and an understanding of the hazards presented by it and other gases.		√
<b>Skills</b>		
Good communication and interpersonal skills to interact with staff and visitors at all levels	√	
Good time management, prioritisation and organisational skills	√	
Good IT skills	√	
Demonstrate knowledge of facts, principles, processes and general concepts in relation to custodial work, building services	√	
Demonstrate basic factual knowledge of safe laboratory working		√
<b>Additional Requirements</b>		
This role involves significant manual handling and a reasonable level of physical fitness is required.	√	

# Behavioural Attributes

This section summarises the behavioural attributes (or competencies) that we expect the role holder to be able to demonstrate, at what level and whether this is an essential or desirable requirement.

Full definitions are at: <https://www.hr.admin.cam.ac.uk/policies-procedures/behavioural-attributes>

Please review these and provide specific examples in your application of how you have demonstrated these attributes in your work, education or other experience. It will assist your application if you explain the situation, what you did and what the outcomes were.

Attribute	Level
Valuing Diversity	A
Achieving Results	D
Communication	D
Innovation and Change	D
Negotiating and Influencing	D
People Development	D
Relationship Building	D
Strategic Focus	D



# Department of Medicine

## Vision

The Department of Medicine seeks to produce the highest quality research output while increasing the efficacy of translation, delivering a global impact upon clinical practice and patient wellbeing. We seek to enhance graduate education, and its interface with the NHS both at the research and clinical levels, while focusing on the success, wellbeing and diversity of its key resource, our staff and students.

## Research Priorities

Our strategic priorities are focused on four Departmental Sections. Cardiovascular and Respiratory Medicine (**CaRM**), Immunology and Infectious Disease (**ImID**), Perioperative, Acute, Critical Care and Emergency Medicine (**PACE**) and Specialty Medicine, Research and Training (**SMaRT**). Our **CaRM** and **ImID** priorities are delivered through the Victor Phillip Dahdaleh Heart & Lung Research Institute (**VPD-HLRI**) and the Cambridge Institute for Therapeutic Immunology and Infectious Disease (**CITIID**), while **PACE** is housed in Cambridge University Hospital. Our scientists can leverage access to patient samples, technologies and datasets, enabled by our strategic location on the biomedical campus.

The **CaRM** Section works with other academic departments across the Clinical School and NHS to foster collaborative research between academic, clinical and commercial partners.

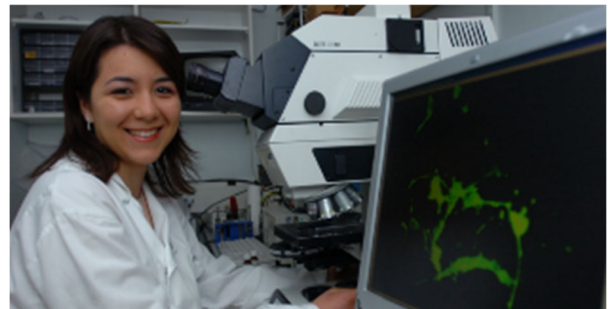
**CaRM** successfully renewed its status as a BHF Centre for Research Excellence in 2024. In collaboration with the Cardiorespiratory BRC theme, **CaRM** supports the **VPD-HLRI**'s mission of improving cardiovascular and lung health across the world by working collaboratively across the university, NHS, commercial and charitable sectors.

**ImID** provides a critical role supporting **CITIID** in establishing itself as a leading international institute by delivering outstanding science which contributes to our understanding of immune-mediated and infectious diseases. A major focus of **ImID** is fostering global health research

through partnerships with institutions such as National University of Singapore - Cambridge Immune Phenotyping Centre, the Hong Kong Jockey Club Global Health Institute.

**PACE** makes substantial clinical and research contributions, with our clinical academics holding leading roles in national policy and clinical trials. Notably, **PACE** leads on the Lancet Neurology Commission on Traumatic Brain Injury and coordinating the International Initiative on Traumatic Brain Injury Research.

The primary role of **SMaRT** is to optimise links with the NHS through formal links with NHS Clinical Service Leads in both the Cambridge University & Royal Papworth Hospitals, the department can host promote clinical academic training and hosts many clinical academic trainees.



## Structure

With 550 staff and students, and a further 200 visitors, the Department of Medicine is the largest in the School of Clinical Medicine. We house over 80 Principal Investigators, 50% of whom are clinically active; and hold over 250 active grants worth **£150M** with an annual expenditure of **£30M**.

The Department sits at the forefront of medical research, delivering scientific success, demonstrable clinical impact, and actively contributing to the development of the BioMedical campus. We ensure interaction with industry is a major focus of our work, building on the longstanding presence of the GSK Cambridge Clinical Unit, the recent arrival of the Global Research and Corporate Headquarters of AstraZeneca and the growing presence of BioNTech.

# School of Clinical Medicine

Doing great work in a great place to work

## About the School

The School of Clinical Medicine currently employs nearly 3,000 people, spanning all varieties of staff type from Academic Professors to administrative support.

In 1976 in response to the recommendation of the Royal Commission on Medical Education in the late 1960's, a complete medical course was re-established in Cambridge with the opening of the School of Clinical Medicine at the new Addenbrooke's Hospital site.

On 21st November 1980, HRH The Duke of Edinburgh, the Chancellor of the University of Cambridge, officially opened the Clinical School Building which presently accommodates the medical library, lecture theatres and seminar rooms.

The University of Cambridge School of Clinical Medicine aspires to change the practice of medicine and improve biological understanding in a wide range of clinical specialties and scientific disciplines. Collaborative research, both within biomedicine and crossing the boundaries to the mathematical, physical and social sciences, is key to our approach. The School also supports key enabling technologies and facilities in imaging, bioinformatics and biological systems. The main areas of research interest are:

- Cancer research
- Cardio-Respiratory Medicine
- Cellular mechanisms of disease
- Diabetes, Endocrinology and Metabolism
- Epidemiology, Public Health and Primary Care
- Genetics and Genetic Medicine
- Haematological and Transplantation Medicine
- Infection and Immunity
- Neurosciences and Mental Health
- Stems Cells and Regenerative Medicine.



**Professor Patrick Maxwell, Regius Professor of Physic and Head of the School of Clinical Medicine**

The School aims to provide leadership in education, discovery and healthcare. It will achieve this through; inspirational teaching and training, outstanding basic and clinical research and integration of these to improve medical practice for both individual patients and the population.

## The School will:

Through inspirational teaching and training, educate individuals who:

- will become exceptional doctors or biomedical scientists
- combine a depth of scientific understanding with outstanding clinical and communication skills demonstrate a caring, compassionate and professional approach to patients and the public and
- are equipped to become future international leaders of their profession.

Through its commitment to the pursuit of excellence, support scientists of international standing in basic and clinical research aiming to:

- understand fundamental biology and thereby the mechanisms underlying disease integrate basic and clinical research
- apply a rigorous mechanism-based approach to clinical problems and
- innovate to solve the health challenges of our society.

# The Cambridge Cluster

The Cambridge Phenomenon, Silicon Fen, the Cambridge Cluster – these are all names used to describe the remarkable concentration of high-tech businesses situated around Cambridge, and that focus on software, electronics and biotechnology. Starting in the 1960s with the launch of Cambridge Consultants, formed to '*put the brains of Cambridge University at the disposal of industry*', the Cambridge Phenomenon has seen an explosion of globally significant companies and innovations across biosciences, medicine and technology, leading to Cambridge being Europe's largest technology cluster. Smartphones, CERN, DNA sequencing and home pregnancy testing kits all contain innovations that have arisen via the Cambridge Phenomenon.

In 2019-2020 the Cambridge Cluster included 26,000+ companies with a combined turnover of £48 billion that together employed nearly 239,000 people. The city publishes 341 patents per 100,000 residents – more than the next four cities in the UK combined.

A major part of the success of the Cambridge Phenomenon, the life sciences sector employs around 21,000 staff, and includes more than 600 companies with a combined turnover of £7 billion. 138 new companies were formed in this sector in 2019-2020 alone. The strength of this sector is apparent when considering the effects of the global COVID-19 pandemic and lockdowns; employment growth still rose by 2.3%, despite the unprecedented challenges brought about by COVID-19.

Many of these life sciences companies have links to the Cambridge Biomedical Campus (CBC). As the largest biomedical campus in Europe, the CBC locates world-leading academics on the same site as the teaching hospitals of the University of Cambridge, enabling the rapid and effective translation of

research into science. The CBC is the home for more than 20,000 researchers, clinicians and healthcare professionals. This includes 10,000 staff in the Cambridge University Hospitals Foundation Trust which includes Addenbrooke's Hospital and The Rosie Maternity Hospital. The recently opened Royal Papworth Hospital is also based on campus.

Other companies are based in the 30+ science and technology parks that are located in and around Cambridge. These include the renowned Babraham Research Campus, the Wellcome Sanger Institute, and the Wellcome Genome Campus. AstraZeneca has its global R&D headquarters in Cambridge and multinational healthcare companies including Amgen, Biogen, Illumina, Gilead Sciences, GSK, Otsuka, and NAPP also have a presence in Cambridge, as do Google, Amazon and Microsoft.

Key research areas for the Cambridge Biomedical Campus are in:

1. Cellular, molecular and structural biology
2. Genomics
3. Data Science
4. Stem cells and regenerative medicine
5. Public health, primary care and applied
6. health research
7. Education and training

Recent successes have included the lead role of Cambridge in COG-UK, a consortium of universities, NHS organisations, the UK's four public health agencies and the Wellcome Sanger Institute. COG-UK is a £20 million endeavour that has pioneered the use of large-scale, rapid whole genome sequencing of SARS-CoV-2, with over 480,000 virus genomes now sequenced. This work has been vital in understanding virus transmission and evolution, and for informing public health responses and vaccine development during the COVID-19 pandemic.



# Terms of Appointment

## Tenure and probation

The appointments will be made on a permanent basis.

Appointments will be subject to satisfactory completion of a three month probationary period.

## Hours of Work and Working Pattern

The hours of work for the position are 36.5 hours, Monday to Friday. Your times of work will be notified to you by your institution.

## Pension

You will automatically be enrolled to become a member of CPS (Contributory Pension Scheme) – a defined benefit and defined contribution pension scheme. For further information please visit: [www.pensions.admin.cam.ac.uk/](http://www.pensions.admin.cam.ac.uk/).

## Annual leave

Full time employees are entitled to annual paid leave of 36 days inclusive of public holidays. For part-time employees, annual leave will be pro rata'd based on days worked.

## General information Pre-employment checks

### Right to work in the UK

We have a legal responsibility to ensure that you have the right to work in the UK before you can start working for us. If you do not have the right to work in the UK already, any offer of employment we make to you will be conditional upon you gaining it.

### Health declaration

Once an offer of employment has been made the successful candidate will be required to complete a work health declaration form.

## Qualifications

The person specification for this position lists qualifications that are essential and/or desirable. Please note that if you are offered the post you will be asked to provide your relevant original certificates of these qualifications.

## References

Offers of appointment will be subject to the receipt of satisfactory references.

## Screening Checks

The nature of this role means that the successful candidate will also need to undergo a health assessment.

## Equality and Diversity

We particularly encourage women and /or candidates from a Black, Asian and Minority Ethnic background to apply for this vacancy as they are currently under-represented at this level within our University.

## Information if you have a disability

The University welcomes applications from individuals with disabilities. We are committed to ensuring fair treatment throughout the recruitment process. We will make adjustments to enable applicants to compete to the best of their ability wherever it is reasonable to do so and, if successful, to assist them during their employment. Information for disabled applicants is available at <http://www.admin.cam.ac.uk/offices/hr/staff/disabled/>

We encourage you to declare any disability that you may have, and any reasonable adjustments that you may require, in the section provided for this purpose in the application form. This will enable us to accommodate your needs throughout the process as required. However, applicants and employees may declare a disability at any time.

If you prefer to discuss any special arrangements connected with a disability, please contact, the Department Administrator, who is responsible for recruitment to this position. Alternatively, you may contact the Clinical School Recruitment Team who are responsible for recruitment to this position via: [cshrstaffhub@admin.cam.ac.uk](mailto:cshrstaffhub@admin.cam.ac.uk)

# The University

**The University of Cambridge is one of the world's oldest and most successful universities. We are a renowned centre for research, education, and scholarship that makes a significant contribution to society. The University is consistently ranked amongst the top universities in the world. Our affiliates have won more Nobel Prizes than any other University.**

Our sustained pursuit of academic excellence is built on a long history of first-class teaching and research within a distinctive collegiate system. For eight centuries our ideas and innovations have shaped the world. Our principal goal is to remain one of the world's leading universities in an increasingly competitive global higher education sector. Today the University of Cambridge is at the centre of a cluster of over 4,300 businesses employing 58,000 people.

Our capital investment projects include the West Cambridge site, the North West Cambridge development and the growth of the Biomedical Campus in the south of the city. The North West Cambridge development includes the opening of a primary school – the first in the UK to be managed by a University. So we are deeply embedded in, and committed to serving, our local community. These are all conspicuous signs of a University that is not only adapting to new needs, but also anticipating the future.

Our mission is to contribute to society through the pursuit of education, learning, and research at the highest international levels of excellence. Our core values are:

- freedom of thought and expression; and
- freedom from discrimination.



# About Us

**The University is one of the world's leading academic centres. It comprises 150 faculties and departments, together with a central administration and other institutions. Our institutions, museums and collections are a world-class resource for researchers, students and members of the public representing one of the country's highest concentrations of internationally important collections.**

The University has an annual income of £2 billion. Research income, won competitively from the UK Research Councils, the European Union (EU), major charities and industry, exceeds £500 million per annum and continues to grow.

The Colleges and the University remain committed to admitting the best students regardless of their background and to investing considerable resources both in widening access and financial support. The 31 Colleges are self-governing, separate legal entities which appoint their own staff. Many academic staff are invited to join a College as a Teaching Fellow, which provides a further social and intellectual dimension. The Colleges admit students, provide student accommodation and deliver small group teaching.

The University awards degrees and its faculties and departments provide lectures and seminars for students and determine the syllabi for teaching and conducting research.

Our instinct for seeking out excellence and setting up enduring and mutually beneficial collaborations has led us to establish strategic partnerships across the globe. Whether it is the successful Cambridge-Africa Programme involving universities in Ghana, Uganda and elsewhere on the African continent; or the close association with the government of India to pursue new research in crop science; or the creation, with Germany's Max Planck Institutes, of a Cambridge-based centre for the study of ethics, human economy and social change – international partnerships are now an inextricable part of the University's make-up.

“Through its outstanding education, research and innovation, the University of Cambridge has made – and continues to make – a lasting contribution to human knowledge and is flourishing. By working at the University of Cambridge, you will be joining a vibrant community of students, scholars and professional services staff committed to supporting and enhancing the University's mission to contribute to society.”

**Prof Deborah Prentice,  
Vice Chancellor 2023**





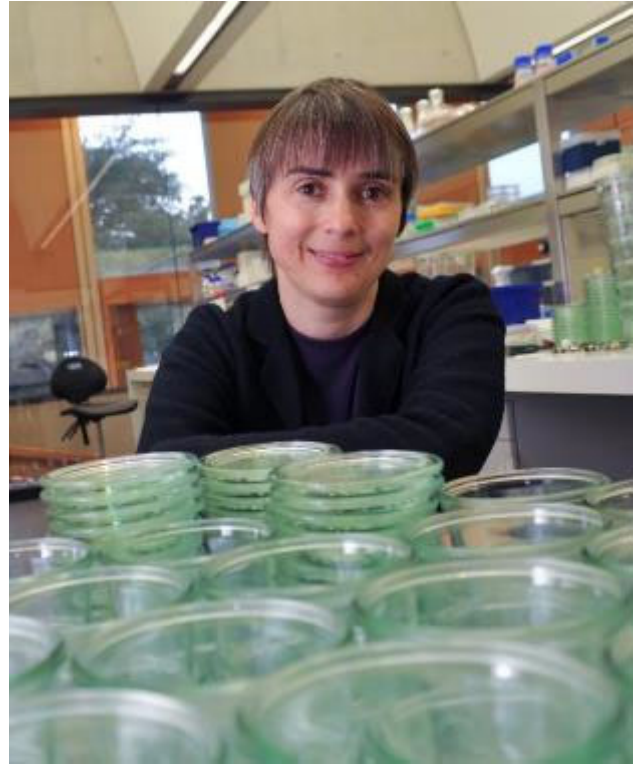
# Working at the University

**Working at Cambridge you will join a diverse, talented and innovative community, with more than 18,000 students and over 16,000 staff from all walks of life and corners of the world.**

The University continually explores strategies to attract and retain the best people. It is committed to supporting its staff to achieve their best. We are a fair, diverse and inclusive society and we believe our staff are our greatest asset. There is strong commitment to developing institutional leadership and supporting and encouraging staff development at all levels.

We offer a variety of roles including academic, research, professional, managerial and support roles. We also offer extensive benefits and excellent learning opportunities within a stimulating working environment.

The University's estate is undergoing the most significant transformation in its history. Cambridge has been able to create a new science and technology campus to the west of the city centre, and is now expanding further to the north west of Cambridge including investing in affordable homes for University key workers and community facilities. Even with our continued development, the University remains within walking or cycling distance across the campus. The University is a major partner on the Cambridge Biomedical Campus and we continue to redevelop our historic city centre sites demonstrating our determination to ensure that we can offer the best facilities and opportunities for our staff and students.



## Equality & diversity

The University has built its excellence on the diversity of its staff and student community. We aim to be a leader in fostering equality and inclusion, and in promoting respect and a sense of belonging for all. We encourage applications from all sections of society. All appointments are made on the basis of merit. We have an Equal Opportunities Policy, along with a range of diversity networks for women, black and minority ethnic and lesbian, gay, bisexual and transgender staff. More details are available here: <http://www.equality.admin.cam.ac.uk/>

The University has a bronze Race Equality Charter aware, with framework for improving the representation, progression and success of minority ethnic staff and students within higher education. Furthermore, the University's Athena SWAN award recognises and celebrates good practice in recruiting, retaining and promoting women.

# Living in Cambridge

**Cambridge is rich in cultural diversity. From beautiful University and College buildings, museums and art galleries, quaint gardens and punts on the River Cam, to a vibrant restaurant and café scene, our employees are surrounded by the wonderful features of this unique city.**

You can find a wide-range of high street shops and 3 shopping centres, with independent alternatives at the historic market and nestled within the passageways in the city centre. You will find a cinema, bowling alley, a nightclub and various live performances At the Cambridge Leisure Park, with further entertainment options at the Corn Exchange, Arts Theatre and the ADC Theatre. Further information can be found on the [Visit Cambridge](#) website.

If you prefer the faster pace of life, London is a 45 minute train journey away. For those travelling from overseas, Stansted Airport is just 45 minutes away and Heathrow Airport under 2 hours away. The University is a short distance from a host of other attractions such as Ely Cathedral, Newmarket Races and various wildlife parks and stately homes. Cambridge is also within easy reach of the beautiful Broads and coastlines of Norfolk and Suffolk.

## Relocation Support

The University recognises the importance of helping individuals to move and settle into a new area. We provide support and guidance to those relocating internationally or domestically to take up a post at the University of Cambridge, liaising with other University offices and selected partners to ensure comprehensive relocation support is available. This includes: accommodation, childcare, schools, banking, immigration and transport. If you would like further information, please visit <https://www.accommodation.cam.ac.uk/>. The Shared Equity Scheme and the Reimbursement of Relocation Expenses Scheme provide financial assistance to qualifying new members of staff with the costs of relocating to Cambridge.

## Accommodation Service

The University Accommodation Service helps staff, students and visiting scholars who are affiliated to the University in their search for suitable accommodation in Cambridge. The dedicated accommodation team can provide access to a wide range of University-owned furnished and unfurnished properties, and has a database of private sector accommodation available for short and long-term lets. For further information and to register with this free service please visit <https://www.accommodation.cam.ac.uk/>





# What Cambridge can offer

**We offer a comprehensive reward package to attract, motivate and retain high performing staff at all levels and in all areas of work.**

The University offers a wide range of competitive benefits, from family leave entitlement, to shopping and travel discount schemes. Our generous annual leave package contributes to the positive wellbeing of our University employees. Sabbatical leave enables academics to focus on research and scholarship, whilst still maintaining their full salary. The University also has a [career break scheme for academic and academic-related staff](#), with additional flexible working policies for all other staff.

## Pay and benefits

The University salary structure includes automatic service-related pay progression in many of its grades and an annual cost of living increase. In addition to this, employees are rewarded for outstanding contribution through a number of regular pay progression schemes. The University offers attractive pensions schemes for employees, with an additional benefit of a salary exchange arrangement providing tax and national insurance savings. Payroll giving is also a simple, tax-efficient way for employees to make monthly donations to charity.



## CAMbens employee benefits

We offer a CAMbens scheme for University employees, providing access to online and in-store shopping discounts and cashback. With more than 2,000 participating retailers, employees can save money on a wide range of household expenses, from groceries and clothes, to holidays and insurance and much more. A range of local discounts are also available, helping employees to save money whilst also supporting local Cambridge businesses and a CAMbens Cycle to Work salary sacrifice scheme is also available, which enables employees to save money on transport costs. A 10% discount rate on the [purchase of train season tickets, bulk buy tickets](#) and an interest free travel to work loan are also available for staff of the University.



# What Cambridge can offer

## Family-friendly policies

The University recognises the importance of supporting its staff. We have a range of family-friendly policies to aid employees' work-life balance including a generous maternity, adoption and shared parental leave entitlement of 18 weeks full pay and emergency family care support via My Family Care.

Other family-friendly support includes:

Our highly regarded workplace nurseries, a childcare salary exchange scheme and a high quality holiday Playscheme may be available to help support University employees with caring responsibilities (subject to demand and qualifying criteria). Further childcare information can be found here:

<https://www.childcare.admin.cam.ac.uk/>

The Newcomers and Visiting Scholars Group is an organisation within the University run by volunteers whose aim is to help newly arrived wives, husbands, partners and families of Visiting Scholars and members of the University to settle in Cambridge and give them an opportunity to meet local people. The Office of Postdoctoral Affairs supports the postdoctoral community within Cambridge. Further details are available here: <https://www.opda.cam.ac.uk/>

## Your wellbeing

The University's Sport Centre, Counselling Services and Occupational Health are just some of the support services available to University employees to promote their physical and mental wellbeing. There are many societies in Cambridge catering for almost every taste and interest. Whether you want to take part in a sport, participate in music or drama, pursue a hobby, or join a political group, you will almost certainly find that a society exists for this purpose. The University also hosts the [Cambridge Science Festival](#) and [Cambridge Festival of Ideas](#), as well as [Open Cambridge](#) weekend, which together attract over 50,000 visitors per year. The festivals are a great opportunity to get your first taste of public engagement, through volunteering, supporting hands-on activities or proposing a talk.

## Development opportunities

We support new employees to settle in through various activities. The encouragement of career development for all staff is one of the University's values and we put this into practice through various services and initiatives. Our Personal and Professional Development Department provides development opportunities and courses for all University employees. These include face-to-face sessions, online learning modules and webinars. Employees may also apply for financial support to undertake training that will lead to a qualification. We offer reduced staff fees for University of Cambridge graduate courses and the opportunity to attend lectures and seminars held by University departments and institutions. Apprenticeship programmes are also available to support employees to develop their skills, experience and qualifications.



# Clinical School Benefits

## Cambridge Biomedical Campus

Being based on Cambridge Biomedical Campus gives the University of Cambridge School of Clinical Medicine employees an unrivalled range of on-site amenities.

### These include:

#### Core amenities

- Marks & Spencer Simply Food
- Clothes & Gift shops
- The Body Shop
- Newsagent
- Barclays Bank
- Hairdressers
- Costa Coffee/Starbucks
- Various food outlets

#### Sports and Leisure

The Frank Lee Sports and Leisure Centre on the Campus is open to everyone who works on the Campus including employees of companies. The Centre offers a comprehensive range of activities for both adults and children (during the school holidays). Facilities include a 25m heated indoor pool, tennis and squash courts, cardio gym and fitness rooms. There is also a licensed bar, restaurant and function rooms.

#### Childcare

Bright Horizons Long Road nursery is located on the Campus making it an ideal location for parents who work at the site. The nursery is purpose built and houses five home bases, each designed specifically for babies, toddlers and pre-school children, as well as a spacious and secure external area in which children can play and explore the outdoors.

#### Apprenticeship opportunities

These are available for new and current members of staff to earn while they learn. The University is committed to nurturing talent and developing expertise through providing relevant vocational and professional apprenticeships across all of its departments and institutions.



## Clinical School Wellbeing Programme

Following the launch of the Clinical School Wellbeing Programme in April 2014 it has continued to develop and grow each year. The School holds regular wellbeing talks and events in addition to hosting two dedicated Wellbeing Weeks packed with activities for staff each year. Activities include staff massages, smoothie bikes, step challenges, arts and crafts sessions and many more.

The School also has a team of Mental Health First Aiders recruited and trained from our own pool of staff. The School is always looking for new ways to engage staff and encourage them to look after their physical and mental wellbeing.



## Equality, Diversity and Inclusion

The School of Clinical Medicine has a dedicated governance group overseeing equality, diversity and inclusion related activities. Regular talks are held throughout the year and all staff members are expected to undertake Equality and Diversity training.

The School has a number of networks for different staff groups encouraging communication and sharing of practices. There is also a growing network of 100+ Equality Champions who meet termly and help raise awareness of equality, diversity and inclusion within their departments. The School currently holds a silver Athena SWAN award utilising the process to critically analyse all areas of equality and diversity within the school.



# How to apply

Applications should be submitted online via the University of Cambridge jobs page [www.jobs.cam.ac.uk](http://www.jobs.cam.ac.uk) by clicking “Apply online” in the job advert. You will need an email address to register for our online system.

Conversations about flexible working are encouraged at the University of Cambridge. Please feel free to discuss flexibility prior to applying (using the contact information below) or at interview if your application is successful.

Informal enquiries are welcomed and should be directed to John O'Brien [jao47@cam.ac.uk](mailto:jao47@cam.ac.uk)

If you have any queries regarding the application process please contact [cshrstaffhub@admin.cam.ac.uk](mailto:cshrstaffhub@admin.cam.ac.uk)

